

**Annexe n°1 :**  
**Topographie du terrain naturel**

**Nouvelle  
imperméabilisation  
depuis 2015**

**Bassin versant  
topographique  
≈ 170ha**

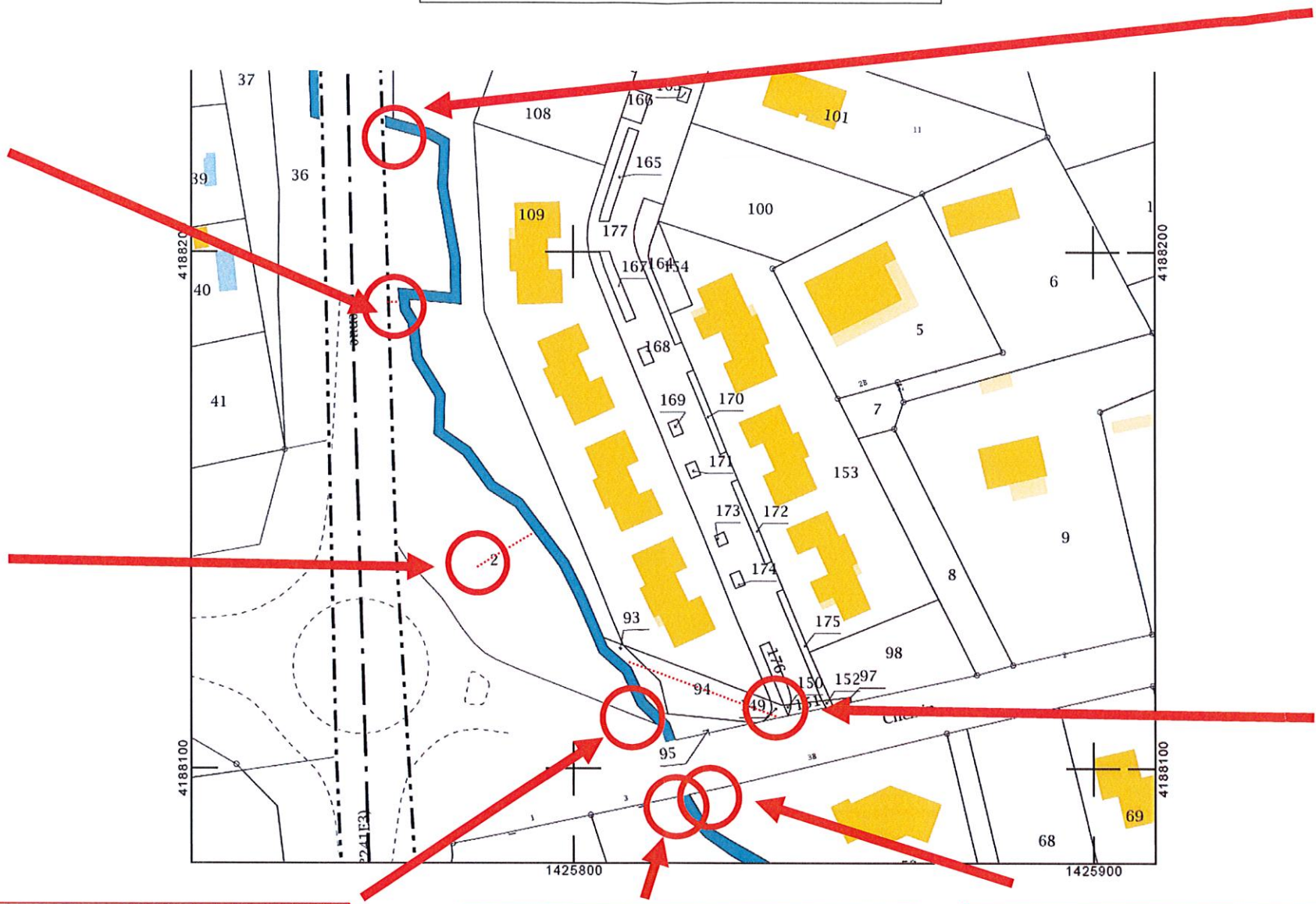
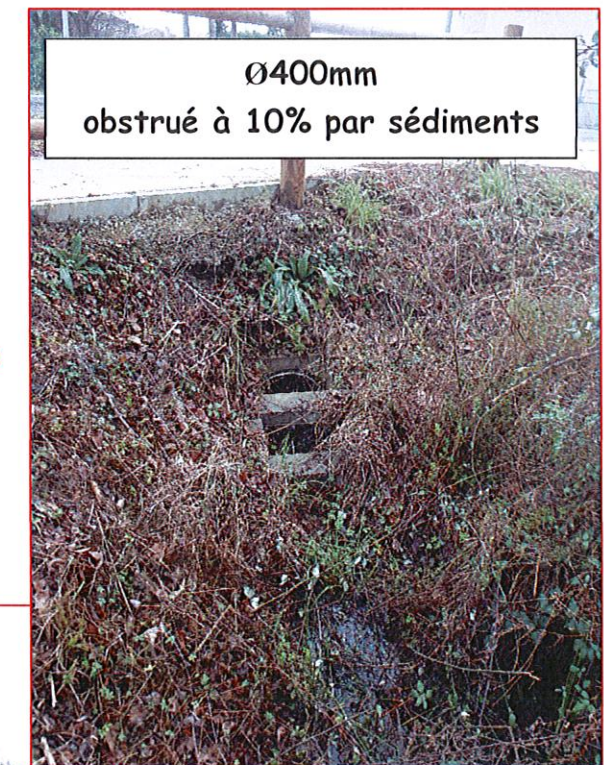
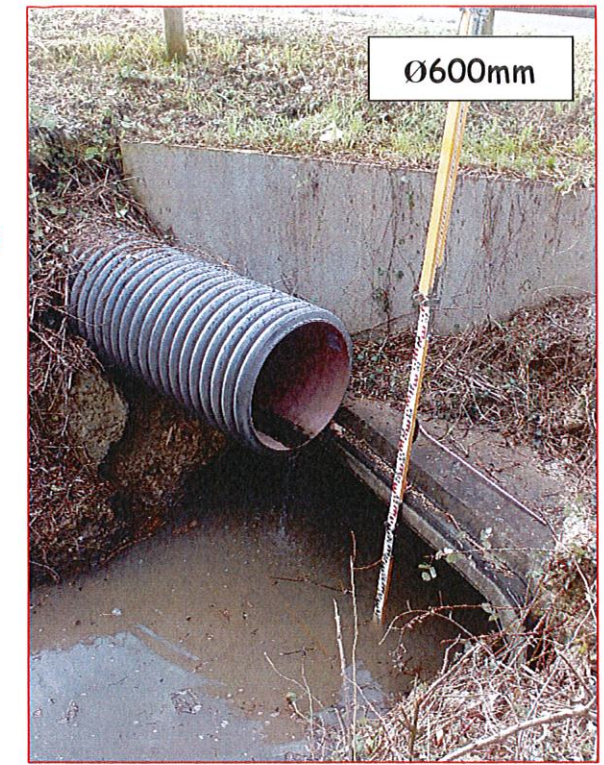
ORTHOPHOTO - IGN 2015



- Cours d'eau
- Limites communales
- Bassin versant topographique de la Rouille Pétrus-Bourbon en amont de la D241E3

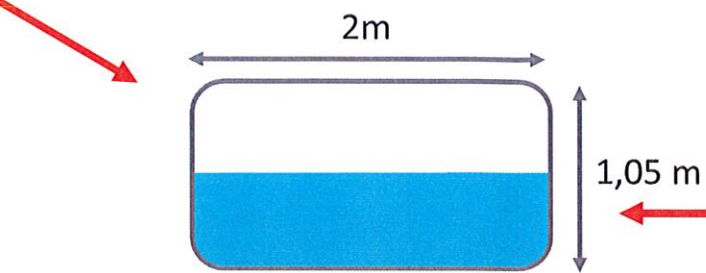


# Annexe n°2 : Rejets d'eaux pluviales

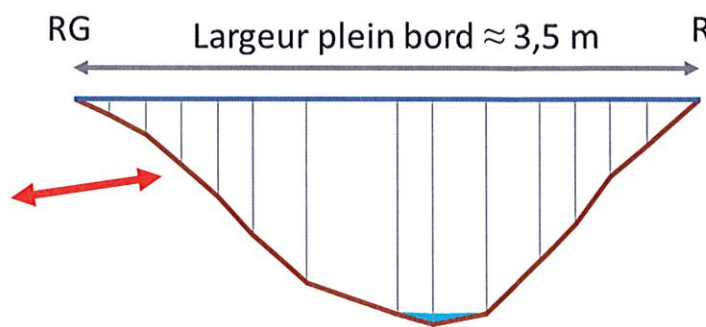




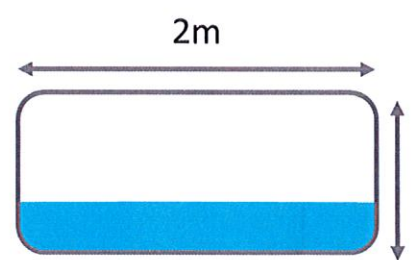
**Annexe n°3 :**  
**Sections d'écoulement**



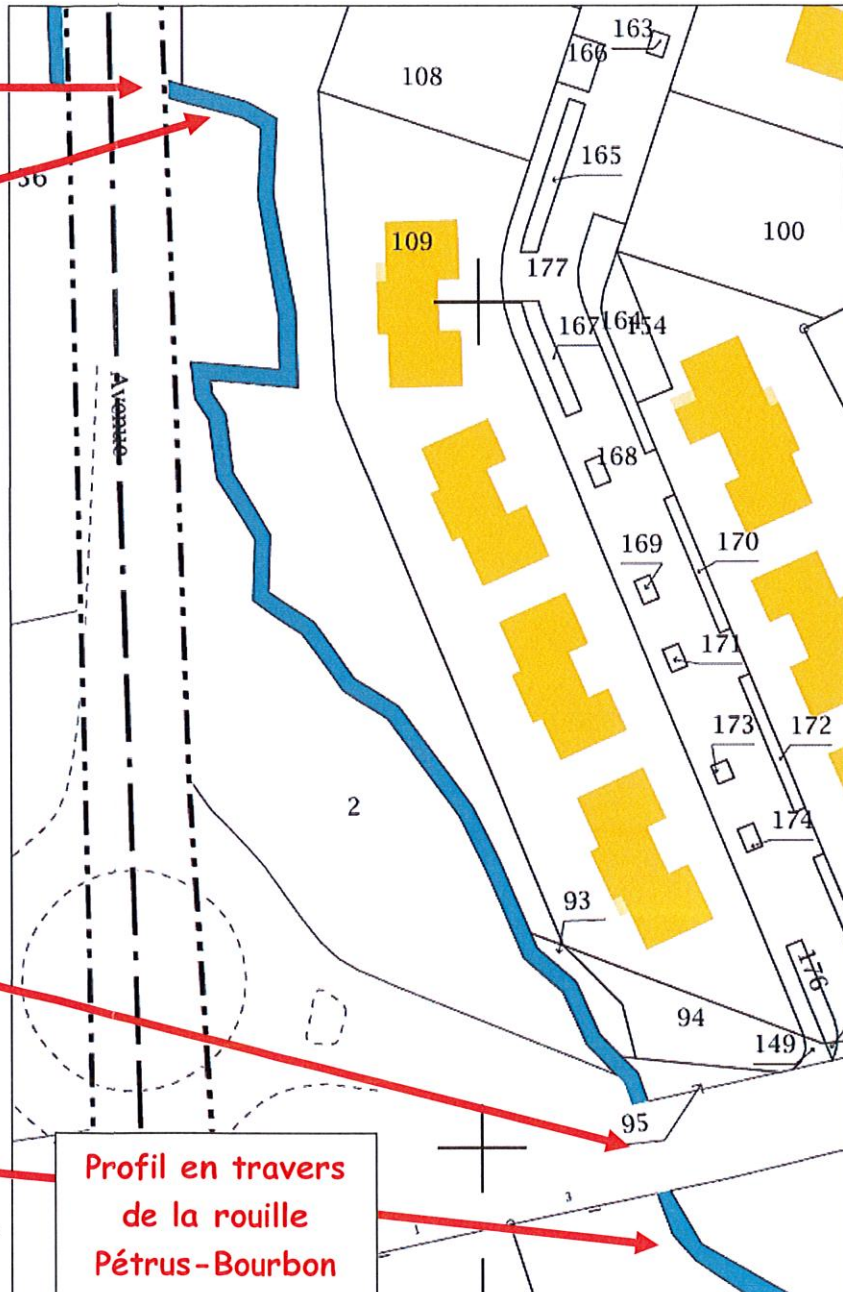
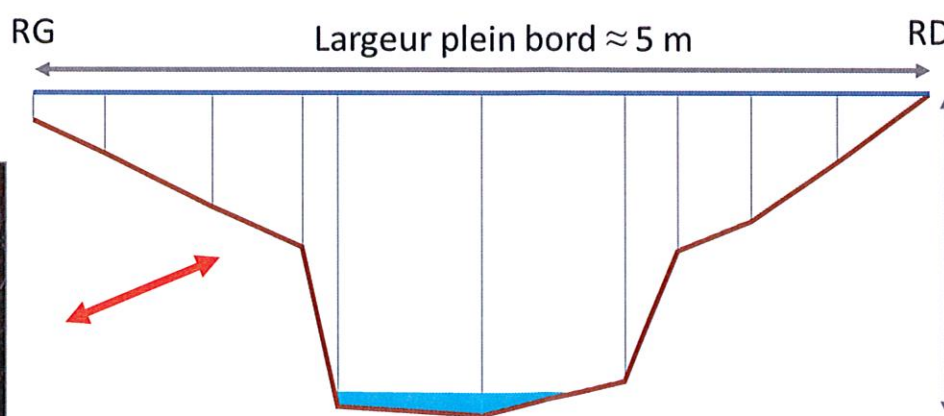
Profil en travers du  
dalot sous le pont  
de la RD241E3



Profil en travers  
de la rouille  
Pétrus-Bourbon



Profil en travers du  
dalot sous le pont  
du chemin du moulin







**Annexe n°4 :  
Entretien de  
la ripisylve**

